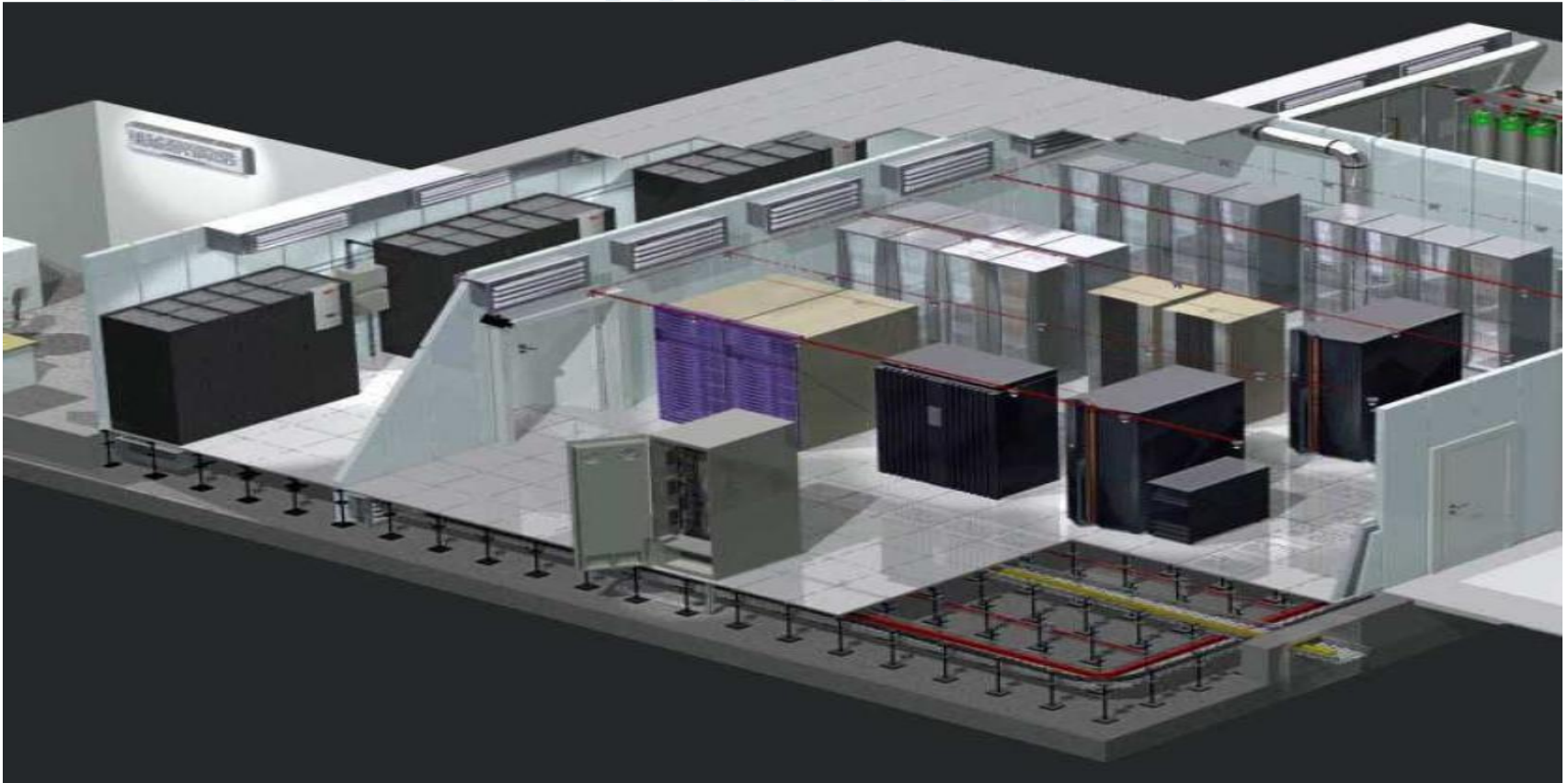
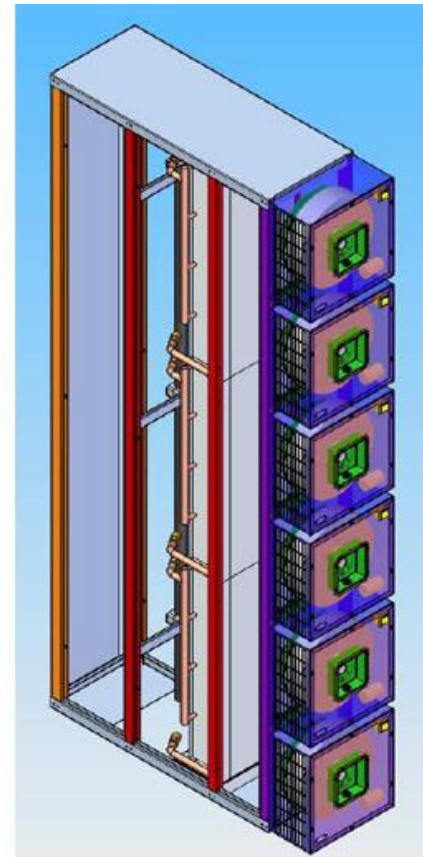


# IT COOLING SOLUTIONS FOR DATA CENTERS

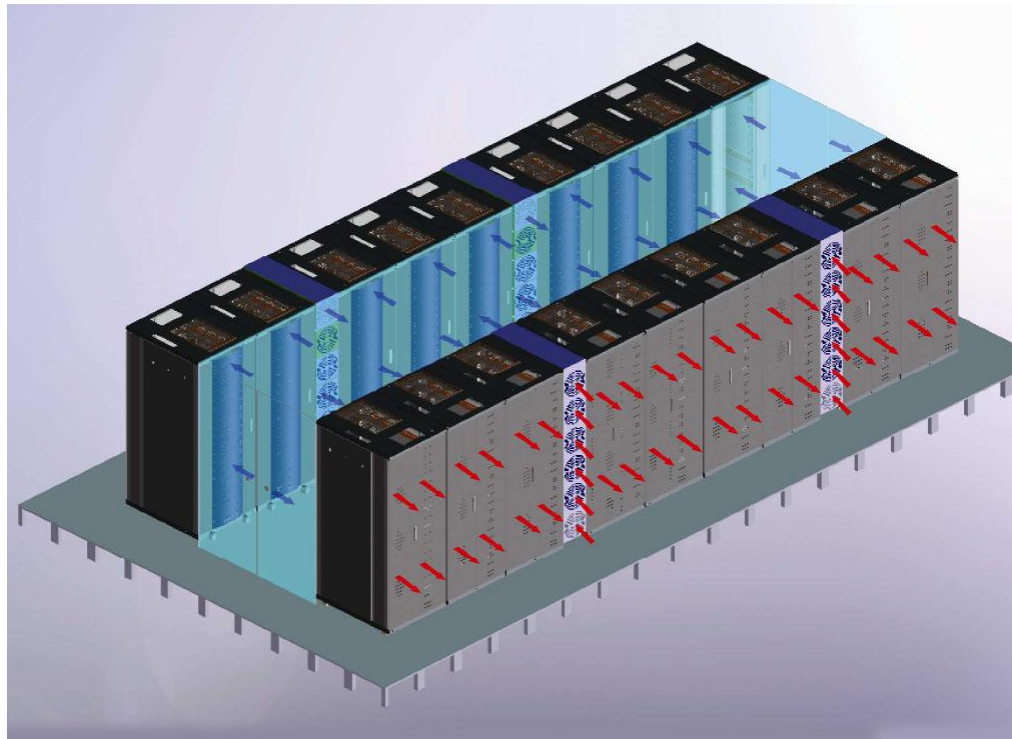


# Direct rack cooling (side cooler)



- Liquid cooling
- Total Heat Removal at Source
- Easy adaptation to any type of rack
- Closed system to prevent hot-cold air
- intervention at inside and from outside the rack
- High cooling capacity (upto 30 kW per rack)
- Easy installation/maintenance
- Managed cooling with integration availability to any control systems

# In row cooling (in a cold/hot aisle containment)



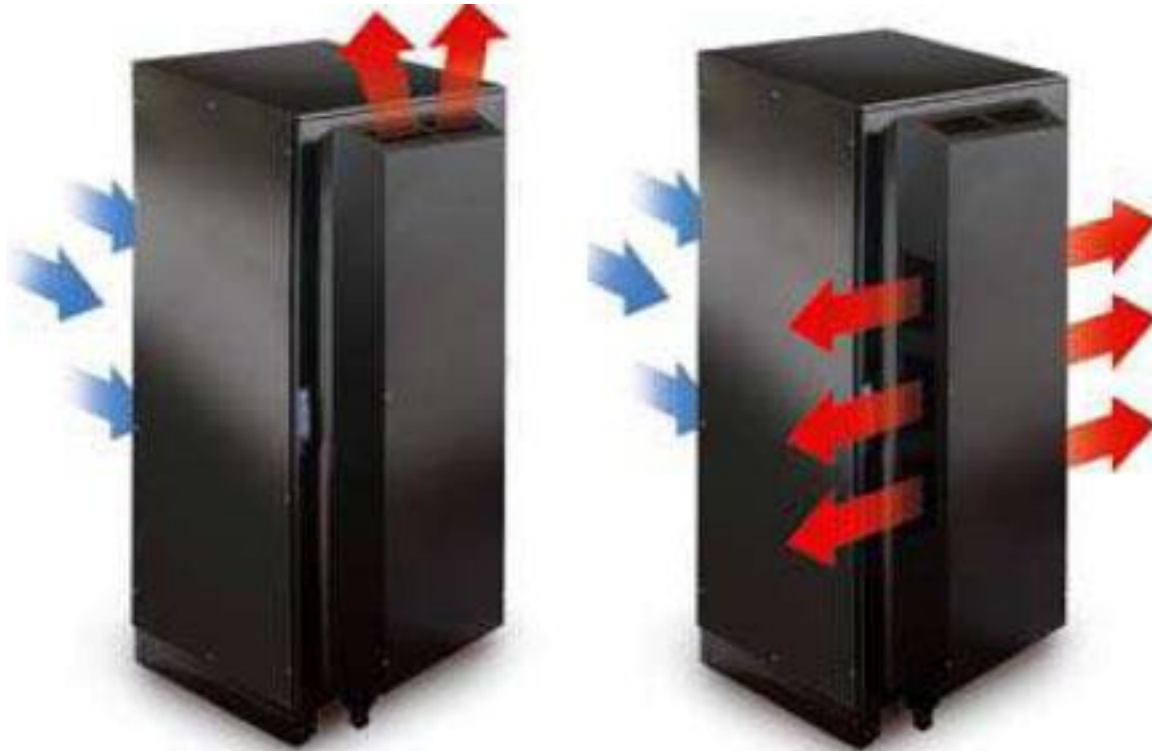


THE FIRST CHOICE IN TELECOMMUNICATIONS AND NETWORKS

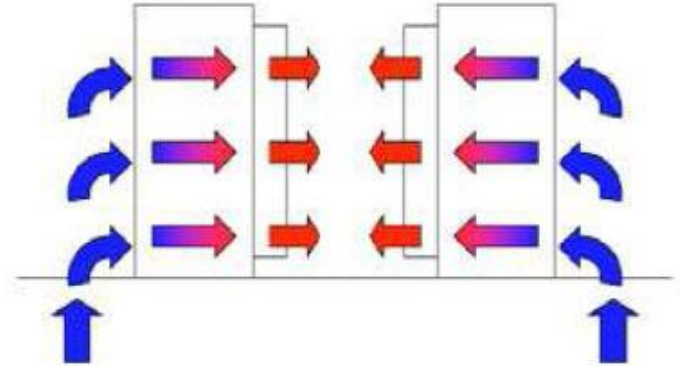
- Liquid cooling
- Enhanced cooling capacity
- Easy installation / maintenance
- Manages cooling with integration availability to any control systems.



## Twist air cooling (Hot air removal)



- **Voltage /Phase/Frequency:** 230/1/50-60 V/ph/Hz
- **Fan air flow (free air):** 3000 m<sup>3</sup>/h
- **Current absorbed:** 1,1x3 A
- **Power absorbed:** 245x3 W
- **Working limits cabinet temperature**  
**Min/Max:** 10/50 °C
- **Side cabinet protection degree:** IP55
- **Noise level ca.:** 58dB
- **Duty cycle:** 100%



| Description  | Alfaphonet code | Manufacturer's code        |
|--|-----------------|----------------------------|
| Twist air cooling 10 KW<br>230/1/50-60 3000 m3/h   | 001.01.AC0205   | ESTC-IT-RAAA00AB20         |
| Closed loop side cooler<br>with chilled water, 16kW<br>230/1/50-60, 42/47U,<br>300x1100mm or<br>300x1200mm | 001.01.AC0309   | ESTC-ITCL-<br>RAWA4C3A20SB |
| Closed loop side cooler<br>with chilled water, 22kW<br>230/1/50-60, 42/47U,<br>300x1100mm or<br>300x1200mm | 001.01.AC0310   | ESTC-ITCL-<br>RAWB2C3A20SB |
| Closed loop side cooler<br>with chilled water, 34kW<br>230/1/50-60, 42/47U,<br>300x1100mm or<br>300x1200mm | 001.01.AC0311   | ESTC-ITCL-<br>RAWC4C3A20SB |



| Description  | Alfaphonet code | Manufacturer's code        |
|--|-----------------|----------------------------|
| Opened loop in row cooler with chilled water, 11kW 230/1/50-60, 42/47U, 300x1100mm or 300x1200mm | 001.01.AC0312   | ESTC-ITOL-<br>RAWA1O3A20SB |
| Opened loop in row cooler with chilled water, 17kW 230/1/50-60, 42/47U, 300x1100mm or 300x1200mm | 001.01.AC0313   | ESTC-ITOL-<br>RAWA5O3A20SB |
| Opened loop in row cooler with chilled water, 22kW 230/1/50-60, 42/47U, 300x1100mm or 300x1200mm | 001.01.AC0314   | ESTC-ITOL-<br>RAWB1O3A20SB |